



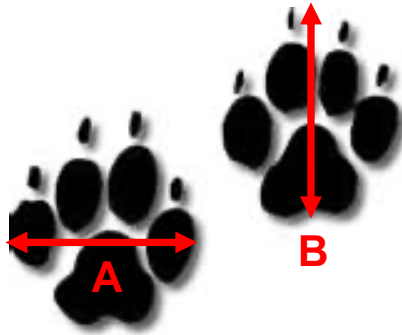
THERA-PAW BOOTS SIZING CHART

Thera-Paw boots are designed to provide a snug fit throughout the paw and wrist or ankle. Please follow the sizing instructions below to determine the best fit for your dog. Keep in mind that we can modify our Thera-Paw boots if needed, to provide a custom fit for your dog.

	A Measure- ment	B Measure- ment	C Measure- ment	D Measure- ment	E Measure- ment	Fits most dogs weighing ON AVERAGE <i>lbs</i>
Thera-Paw Boot SIZE <i>aka</i>	Paw Width <i>inches</i>	Paw Length <i>inches</i>	Paw Circumfer- ence <i>inches</i>	Wrist/ Ankle Circumfere- nce <i>inches</i>	Wrist/ Ankle Height <i>inches</i>	
T/B S <i>small</i>	2"	2 ½"	up to 3"	up to 3"	2"	15 to 35
T/C S/M <i>small/medium</i>	2 ¼"	2 ¾"	up to 4"	up to 3 ½"	2 ½"	30 to 50
T/D S/M2 <i>small/medium2</i>	2 ½"	3"	up to 5 ¼"	up to 4"	2 ½"	40 to 70
T/E M <i>medium</i>	2 ¾"	3 ½"	up to 6 ½"	up to 4 ½"	2 ¾"	60 to 90
T/F M/L <i>medium/large</i>	3"	3 ¾"	up to 6 ¾"	up to 5"	3 ½"	80 to 110
T/G L <i>large</i>	3 ½"	4 ¼"	up to 7 ½"	up to 6"	4"	100 to 130

Directions

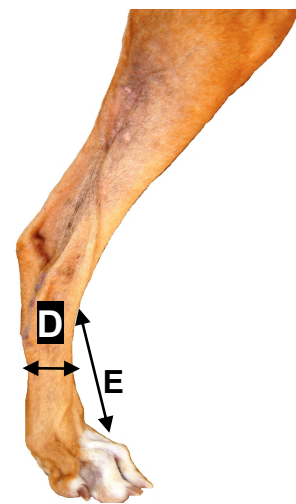
1. Place a piece of paper on a hard floor surface.
2. Have your dog stand and bear weight with the affected paw on the piece of paper.
3. Trace around the outline of the paw, keeping the pen vertical and in continuous contact with the paw.



4. Determine the **Paw Width (A)** by measuring the paw tracing at its widest point.
5. Determine the **Paw Length (B)** by measuring the paw tracing at its longest point to the tip of the nails.
6. Determine the **Paw Circumference (C)** by measuring the paw around its widest point including the knuckles.



FRONT LEG



BACK LEG

7. Determine the **Wrist/Ankle Circumference (D)** by measuring the circumference at the midpoint of the wrist or ankle.
8. Determine the **Wrist/Ankle Height (E)** by:
 - a. Measuring the height from the back of the main footpad to the base of the carpal pad (**Front Leg**).
 - b. Measuring the height from the top of the paw to the ankle joint (**Back Leg**).
9. Compare your measurements with those on the sizing chart to determine the correct Thera-Paw size for your dog.

Helpful Hints and Other Useful Information

1. When tracing your dog's paw, place the piece of paper on a hard surface (e.g., wood or tile floor) and not a thick, carpeted surface or the tracing will not be accurate.
2. Hold the piece of paper down on the ground or your dog may slip.
3. If your dog is nervous about bearing weight on the piece of paper, lift his/her other paw off the ground so that he/she will need to bare weight on the affected paw.
4. If your dog is not able to bear weight on the affected paw because of pain or a wound, measure the same paw (**Front** or **Back**) on the opposite side AS LONG AS that paw is similar in size and shape.
5. If the affected paw is abnormally shaped in any way (e.g., toe amputation, digital deformities) please consult with us before purchasing the Thera-Paw boot. It is also helpful if you send us a digital photo of your dog's affected paw. Please e-mail your photo to: questions@therapaw.com.

Thera-Paw Boot Custom Modifications

1. Custom modifications can be made for an additional charge.
2. Determine the correct Thera-Paw size using the **Paw Width (A)**, **Length (B)**, and **Circumference (C)** measurements. Then, measure your dog's **Wrist/Ankle Circumference (D)** and **Height (E)**.
3. If your dog's paw **Girth (C)** is WIDER (your measurement is greater) than the determined paw size, then the Thera-Paw boot needs to be widened (this style modification is called the "Expanded Toe Box").
4. If your dog's **Wrist/Ankle Circumference (D)** is WIDER (your measurement is greater) than the determined paw size, then the Thera-Paw boot cuff needs to be widened [we widen the cuff of the boot by adding more neoprene (stretchy material) to the cuff].
5. If your dog's **Wrist/Ankle Height (E)** is SHORTER (your measurement is less) than the determined paw size, then the Thera-Paw boot cuff needs to be cut down.
6. Most custom modifications can be done in 1-3 business days. Please account for this additional time before placing your order.
7. Other modifications are also possible. Please contact us for more information on modifications (908-439-9139; questions@therapaw.com).